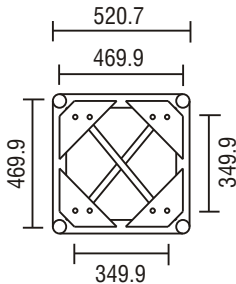


## TFL Generic Truss Medium Duty

The combination of large load capacity and compactness makes the Medium Duty truss ideal for most general applications involving spans of up to 18 metres.

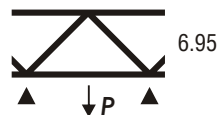


### Load Table

Span (metres)		3	6	9	12	15	18
<b>UDL</b>	<b>kg</b>	3743	2932	1872	1372	998	767
<b>DEFL</b>	<b>mm</b>	3	12	26	45	62	87
<b>CPL</b>	<b>kg</b>	2974	1580	936	686	499	384
<b>DEFL</b>	<b>mm</b>	4	11	20	36	55	79
<b>TPL</b>	<b>kg</b>	1497	1081	702	515	374	288
<b>DEFL</b>	<b>mm</b>	3	13	25	45	68	96
<b>QPL</b>	<b>kg</b>	1040	749	468	343	250	192
<b>DEFL</b>	<b>mm</b>	3	9	23	42	63	91

Span (metres)		
<b>Cantilever Span</b>		3
<b>UDL</b>	<b>kg</b>	1279
<b>DEFL</b>	<b>mm</b>	0.2
<b>CPL</b>	<b>kg</b>	665
<b>DEFL</b>	<b>mm</b>	10

### Point Load Mid kN



Connection: Gusset Plate. Fixings: M16 x 45 HT Bolt, Nut & Washers

- All loads are given in Kilograms
- Allowance has been made for self-weight of truss
- Allowance has been made for frequent use factor of 85% according to EN17115
- The payload of the truss has been calculated as a permanent action. Should it be necessary to consider the payload as a variable action, the tabulated figures should be reduced to 90% of the given values

## TFL Generic Truss Medium Duty

### Material Specifications

Main Chord:	50.8mm x 3.25mm
Braces:	25.44mm x 3.25mm
Material:	EN AW-6082 T6
Fixings:	M16 x 45mm grade 8.8 HT Nuts & bolts

### Accessories

Circles
Angled Corners
Bespoke lengths
Ladder sections

### Item Codes, Weights and Dimensions

MD10FN	MD 10ft Truss Section	3048mm x 521mm x 521mm	38kg
MD8FN	MD 8ft Truss Section	2438mm x 521mm x 521mm	32kg
MD5FN	MD 5ft Truss Section	1524mm x 521mm x 521mm	26.5kg
MD4MN	MD 4m Truss Section	4000mm x 521mm x 521mm	48kg
MD3MN	MD 3m Truss Section	3000mm x 521mm x 521mm	38kg
MD2MN	MD 2m Truss Section	2000mm x 521mm x 521mm	28kg
MD1MN	MD 1m Truss Section	1000mm x 521mm x 521mm	18kg
MDC4N	MD Corner Section	541mm x 541mm x 521mm	23kg
MDS4N	MD Sleeve Section	541mm x 541mm x 521mm	33kg

### Design Specification

Manufactured in accordance with

BS EN 1090-3:2008 : Technical Requirements for aluminium structures

EN ISO 9001:2008 : Quality management systems

BS EN 1999 Pt 1-1 : Design of Aluminium Structures, General structural rules

EN 17115 : Entertainment Technology – Specification for design and manufacture of aluminium and steel trusses.

